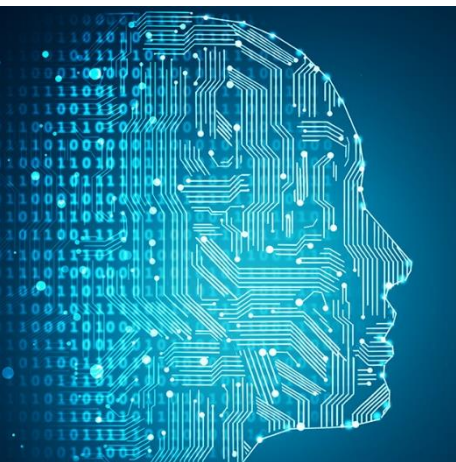
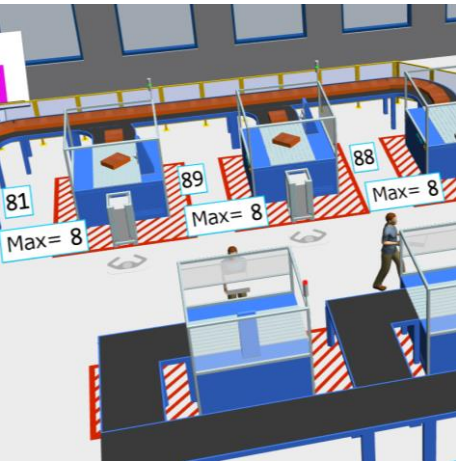


Automatic architecture search for simulation metamodeling methods using machine-learning

Master-thesis



Description

Goal of the Master-thesis to identify different machine-learning metamodeling methods for Simulation (neural networks, regression,...). A metamodel approximates the input-output function of a simulation model. Once the methods are identified, possibilities for an automatic architecture search will have to be highlighted and implemented into a demonstrator.

Tasks

- Literature review about current simulation metamodeling methods
- Concepts for an automatic architecture search for these methods
- Software implementation of the concepts

Requirements

- Strong knowledge in machine-learning
- IT and programming knowledge
- Fluent in German or English, both written and verbal

Contact

Harold Billiet

Tel.: +49 (0)30 314-26290

E-Mail: harold.billiet@tu-berlin.de

